

BURY BUCKETS FOR BEETLES



Digging up your bucket

Thank you for burying a bucket for beetles. It is now time for you to dig up your bucket, sift gently through the contents and report back to us letting us know what you found. We are hoping you will see either stag beetle larvae or even adult stag beetles. We would also like to know if you don't see them. On the back page there is a list of other interesting invertebrates that you may find in your bucket.

1. Remember, only dig up your bucket if it's been buried for at least 12 months and try to pick a fine day.

2. Lift the bucket carefully out of the soil and tip the contents gently onto a plastic sheet or open bin bag to examine the contents.

3. Sift through the contents systematically checking everything that you find with our ID chart overleaf and on the back page. If you think you have stag beetle larvae please take a photograph to send in with the form overleaf. You can also email your findings and photographs to stagbeetle@ptes.org. Don't forget to fill in your name and address too. If you find larvae and you are not sure whether or not they are stag beetle

larvae send us a photo and we will identify it for you. Please put a coin or ruler in your picture so we can tell the scale.

4. Put the bucket carefully back in the ground and then tip the contents back in the bucket carefully. Top up with more soil if necessary.

5. After a month check to see if the soil level has lowered. If it has please top it up with a mixture of half soil and half woodchip.

6. Ask a friend to bury a bucket too.





Stag beetle larvae (*Lucanus cervus*)
 We are hoping you will find year-old larvae in your bucket. At this stage they are approximately 1cm long. They are fairly smooth skinned have orange head and legs and brown jaws. The gut contents can sometimes be seen through the skin in the lower half, giving the appearance of a blackish patch along the back. Placed on the ground they take up a C shape.



Adult female stag beetles are up to 50mm long, smooth and shiny, with small jaws.



Beetle pieces may be found in your bucket if the female died in situ or if she was predated whilst laying her eggs.



Adult male stag beetles can vary in size from 35mm to 75mm long and have large antler-like mandibles.

Larvae, H. Rothacher; other images PTES, Deborah Harvey, Aimi MacInnes

Name

Address

Email

Date bucket buried

Date bucket dug up

No. stag beetle larvae

No. adult stag beetles

ADDITIONAL COMMENTS (eg general soil type/ description of where you buried your bucket/ if you used dead wood from your garden/ if you found other interlopers in your buckets such as newts & toads, subterranean caterpillars, vine weevils, fly larvae (maggots), ants and other types of beetles).

If you find any stag beetle adults or larvae please take a photograph and either email them to stagbeetle@ptes.org with your name and postcode or post them in with this survey form. If you have any queries please call us on 020 7498 4533. Thank you.

Please return this form to:

PTES
 FREEPOST LON82
 15 Cloisters House
 8 Battersea Park Road
 London
 SW8 4YY



Registered charity number 274206





Earthworms

need moisture to breathe and so will dig deeper if the soil dries out.
Size: 9-30cm.
Colour: pink/ brown.



Garden woodlice

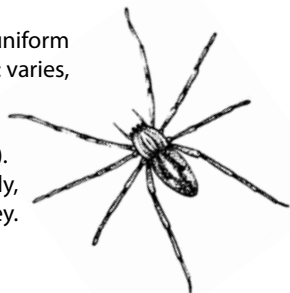
are crustaceans that you are likely to find in damp soil.
Size: up to 15mm.
Colour: dull grey/ light brown.



Slugs, including the great black, tend to be vegetarian surface feeders. However some of the 20 species found in the UK, like the shelled slug, burrow and feed on other slugs and worms.
Size: 4-15cm. Colour: varies black/ brown/ pink.

Spiders are fairly uniform in appearance. Size: varies, females up to 18mm & males up to 9mm (body size only).

Colour: varies widely, generally brown/ grey.



Ground beetles

are common in gardens. There are several species.
Size: 12-18mm. Colour: varies.

Images are approximately life-size



Garden snails are one of the 80 or so species of snail in the UK you are most likely to find in your garden.

Average shell width: 3-4cm (adults).

Colour: pale grey, moist skin with brown/ yellow/ black shell.



Millipedes (above) are very common in gardens. Size: up to 5mm. Colour: grey/ brown.



Centipedes (right) are carnivores, their thin bodies enable them to slip easily through the soil in search of prey.

Size: 2-7cm depending on species.

Colour: varies brown/ black/ yellow.



Earwigs feed on plant and animal material and lay their eggs in the soil. Size: generally 17mm. Colour: mainly brown.



Rove beetles, also known as devil's coach-horse, look similar to earwigs but are uniformly black and raise their rear end in defence. Size: 12-14mm.

Wireworms or click beetle

larvae are up to 25mm long and feed on plant roots or dead wood in the soil.

Size: 1- 2cm.

Colour: beetles black/ brown, larvae orange.



Sketches by Lizzie Harper